



**The  
Florida  
Standards  
Assessments:  
What Every  
Parent Should  
Know**

**Lutz K-8 School  
FSA Information  
Mr. Phillips, Mr. Alwood  
and Ms. Truman**



# What is FSA?

- The Florida Standards Assessments (FSA) measures student mastery of the Florida Standards through a variety of item types.
- The Florida Standards are closely aligned with the educational standards used throughout the country, more commonly known as “Common Core”.



# Achievement Levels

Level 1	Level 2	Level 3	Level 4	Level 5
Inadequate: Highly likely to need substantial support for the next grade	Below Satisfactory: Likely to need substantial support for the next grade	Satisfactory: May need additional support for the next grade	Proficient: Likely to excel in the next grade	Mastery: Highly likely to excel in the next grade



# How do the Florida Standards benefit my child?

- Prepares students for success in college, career, and life by emphasizing analytical thinking
- FSA includes more than multiple choice questions
- Students may be asked to create graphs, interact with text content, and respond differently than on traditional tests
- Question types assess students higher-order thinking skills
- Parents and families are able to review sample question types by accessing practice tests on the FSA portal –
  - [Fsassessments.org](https://fsassessments.org)



EDUCATION

## Implications for Our Students:

- 3<sup>rd</sup> Grade Promotional Requirements
- Middle School Elective Course Scheduling
- School Grade & Funding
- Preparing students for higher paying jobs (College and Career Ready)
- Student, Parent, & Teacher Pride



# What Assessments are Administered?

- **Grade 3-8**: ELA-Reading and Math
- **Grade 4-6**: ELA- Writing/Reading and Math
- **Grade 5 and 8**: Statewide Science Assessment- Next Generation Sunshine State Standards (NGSSS)
- **Grades 7 and 8**: Writing



EDUCATION


# Paper Based vs. Computer Based Testing



# Scheduled FSA Dates

	<b>Elementary Students</b>	<b>Middle School Students</b>
<b>FSA Writing</b>	Grades 4 and 5 - April 5 <sup>th</sup>	6 <sup>th</sup> Grade - April 5 <sup>th</sup>
<b>FSA Math</b>	Grades 3-5 – May 10 and 11	Grades 6-8 – May 10 and 11
<b>FSA Reading</b>	Grade 3 – April 5 and 6 Grades 4 and 5 – May 3 and 4	6-8 – May 3 and 4
<b>FSSA Science</b>	5 <sup>th</sup> Grade – May 17 and 18	8 <sup>th</sup> Grade – May 17 7 <sup>th</sup> Grade Civics – May 18





**Florida Standards Assessment Design**  
**English Language Arts**  
*Text-Based Writing*



# Writing Assessment

- Scored as part of the Reading Assessment
- May be an informative or opinion-based prompt
- Given 2 – 4 articles (Text Sets) to read & respond to a related prompt
- 120 minutes to read, annotate, and write an informative or opinion-based essay
- Must include references from the text & provide personal insight/original thought to support ideas



# Text-based Writing Sample Prompt

Write an informative essay about the effects wild animals and humans have on each other when they live in the same area. Use information from the passages in your essay.

Manage your time carefully so that you can

- read the passages;
- plan your response;
- write your response; and
- revise and edit your response.

Be sure to include

- an introduction;
- information from the passages as support; and
- a conclusion that is related to the information presented.

Your response should be in the form of a multiparagraph essay. Write your response in the space provided.

# Sample Writing Text Set

Read the "The Wild Among Us" passage set.

## The Wild Among Us

### Source 1: The Howl Next Door

by Julie McPartland

1 Ahhh-eeee-ouuu! Coyotes are famous for their howl. People often think of coyote howls as a sound far off in the wild mountains or open plains. They imagine sitting by a fire and listening to nighttime conversations between the wild canines in the distance. That high-pitched cry is not always so far away, though. More and more, coyotes are found in or near cities.

2 In recent years, the animals have even moved into parks in New York City. No, coyotes are not seen in city parks or playgrounds. Although coyotes live in city parks, you can see them up close. Coyotes, like foxes, are cautious around humans. One urban park has only seen five coyotes face-to-face.

### Source 2: Power Chewers

by Karl Szymas

A flash of a bushy tail, a speedy furry chase, the sudden stop—a squirrel hangs upside down on the underside of a large branch, listening. He uses his strong claws to defy gravity and, if we remain still, we can watch as he scampers further up the tree. A squirrel is such a common sight in many cities that most of us do not stop to think about them. One of the squirrel's most powerful traits is also one of its most troubling secrets. Squirrels' teeth never stop growing.

6 There is an expression "long in the tooth," meaning old. Does this mean squirrels go around with long, long teeth as they age? Not a chance. They use their teeth constantly, grinding them down. As omnivores, squirrels like to chew on nuts, berries, and insects. Sometimes they end up chewing on other things. This constant chewing can cause cities to power down.

### Source 3: Pigeons and People

by Nicole Wilson

Look up in any major city and you may spot a pigeon perched on the ledge of a building. Tall buildings have only been common in cities for a few hundred years. Where did pigeons hang out before that? Many pigeons living in cities today are descendants of rock doves. Rock doves originally made their homes in steep cliffs that bordered the ocean. Tall buildings resemble those steep cliffs, so it makes sense that pigeons have made themselves at home there. Some city dwellers see them as loud pests, cooing and causing a mess. Pigeon droppings spoil the beauty of buildings, cars, and statues. However, people may be the main reason pigeons came to cities in the first place.

People and pigeons have a long history. Because pigeons are mild-mannered, they have been used as pets and helpers to humans for nearly 5,000 years. Pigeons were brought into cities as sources of

EDUCATION




**Florida Standards Assessment Design**  
**English Language Arts**  
*Reading Comprehension*



# Reading Assessment

- Paper-based
- Composed of approximately 6–8 reading passages, with sets of 6–11 items relating to each passage
- Approximate Word Count Range for Text or Text Set

Grade	Number of Words
3rd	100-700
4th	100-900
5th	200-1000

- 
- Includes informational and literary reading passages
  - Informational passages may include magazine/newspaper articles, editorials, and biographies
  - Literary passages may include short stories, poems, folk tales, and selections from novels
  - Percentages of Text Type by Grade Band

Grade Band	Literary	Informational
3-5	50%	50%
6-8	40%	60%
9-12	30%	70%



# Item Types:

- **Multiple-Choice**
- **Editing Task**
- **Selectable Text/Two-Part**
- **Multi-select**
- **Table Match**





# Editing Task Item

Read the passage and then answer Numbers 16 through 18. There are four underlined words or phrases in the passage to show which word or phrase may be incorrect.

Not even traveling can stop the president from working. There is a special airplane designed just for the president. It has three different levels. Those levels include bedrooms, a conference room, offices, and even a medical room with a docktor on board. This airplane is called Air Force One.

The president travels with a lot of different people: other officials, aides, and even reporters. Air Force One can handle all the guests. There are to kitchens that feed up to one hundred people at a time. Going long distances is easy because this airplane might refuel in the air.

The name Air Force One is usually used for the large white and blue plane with these special features. However, even if the president flies on a different plane, that plane would be called Air Force One. This is because any plane that the president flies on is referred to by this name.

Now answer Numbers 16 through 18. Choose the correct word or phrase for each of the following.

16. Those levels include bedrooms, a conference room, offices, and even a medical room with a docktor on board.

- (A) docter
- (B) doctor
- (C) dockter
- (D) correct as is


18. The name Air Force One is usually used for the large white and blue plane with these special features.

- (A) white and blue large plane
- (B) blue and white large plane
- (C) large plane white and blue
- (D) correct as is

## 17. Part A

There are to kitchens that feed up to one hundred people at a time.

- (A) too
- (B) tow
- (C) two
- (D) correct as is



# Selectable Text Items (Two-Part)

2. This question has two parts. First, answer Part A. Then, answer Part B.

## Part A

What is the theme of Passage 1?

- Ⓐ High hopes can lead to disappointment.
- Ⓑ Listen to those who are older and wiser.
- Ⓒ If you are nice to others, they will be nice to you.
- Ⓓ When planning an event, be sure to include everyone.

## Part B

Which sentence from the story supports the answer in Part A?

- Ⓐ "She would wait for them, she said, and would not set until all three returned and told her about their pleasant visit." (paragraph 2)
- Ⓑ "'What did you bring me from the supper?' she asked." (paragraph 5)
- Ⓒ "She ate it, and then she turned to her three children, for she had something important to say to them." (paragraph 6)
- Ⓓ "'To those who are thoughtful of their mother, great blessings come.'" (paragraph 9)



# Multi-Select

**13.** What are **two** ways that *Tyrannosaurus Sue*'s skeleton is used?

- Ⓐ as an interesting *Tyrannosaurus rex* display that brings visitors into the museum
- Ⓑ as evidence to prove that *Tyrannosaurus rexes* were warm-blooded creatures
- Ⓒ as an example of how to make missing *Tyrannosaurus rex* bones
- Ⓓ as a tool that allows scientists to study *Tyrannosaurus rex* fossils
- Ⓔ as a demonstration of the daily activities of *Tyrannosaurus rexes*



# Table Match

5. Fill in the circles to create a summary of Passage 2 by putting the events in the correct order.

	First	Next	Then	Finally
<b>Eagle takes Fox to an island.</b>	(A)	(B)	(C)	(D)
<b>Fox tricks Eagle into giving him her eggs.</b>	(E)	(F)	(G)	(H)
<b>Fox makes up a song to trick the animals.</b>	(I)	(J)	(K)	(L)
<b>The animals build a bridge for Fox to walk over.</b>	(M)	(N)	(O)	(P)



EDUCATION

# Florida Standards Assessment Test Design Math



## MATH FSA

- 3-6 Paper Based Test and 7-8 Computer Based
- 60 – 64 Questions
- Questions and answers will be keyed into the same booklet.
- Students will work out problems within their test/answer book.
- 4th and 5th Grade will get a Reference sheet with conversions and formulas.

# Reference Sheets

## 4th Grade

## 5th Grade

### Grade 4 FSA Mathematics Reference Sheet

#### Customary Conversions

1 foot = 12 inches  
1 yard = 3 feet  
1 mile = 5,280 feet  
1 mile = 1,760 yards

1 cup = 8 fluid ounces  
1 pint = 2 cups  
1 quart = 2 pints  
1 gallon = 4 quarts

1 pound = 16 ounces  
1 ton = 2,000 pounds

#### Metric Conversions

1 meter = 100 centimeters  
1 meter = 1000 millimeters  
1 kilometer = 1000 meters

1 liter = 1000 milliliters

1 gram = 1000 milligrams  
1 kilogram = 1000 grams

#### Time Conversions

1 minute = 60 seconds  
1 hour = 60 minutes  
1 day = 24 hours  
1 year = 365 days  
1 year = 52 weeks

#### Formulas

$$A = lw$$

$$P = 2l + 2w$$

### Grade 5 FSA Mathematics Reference Sheet

#### Customary Conversions

1 foot = 12 inches  
1 yard = 3 feet  
1 mile = 5,280 feet  
1 mile = 1,760 yards

1 cup = 8 fluid ounces  
1 pint = 2 cups  
1 quart = 2 pints  
1 gallon = 4 quarts

1 pound = 16 ounces  
1 ton = 2,000 pounds

#### Metric Conversions

1 meter = 100 centimeters  
1 meter = 1000 millimeters  
1 kilometer = 1000 meters

1 liter = 1000 milliliters

1 gram = 1000 milligrams  
1 kilogram = 1000 grams

#### Time Conversions

1 minute = 60 seconds  
1 hour = 60 minutes  
1 day = 24 hours  
1 year = 365 days  
1 year = 52 weeks



## FSA Item Types

- Multiple Choice
- Multiselect
- GRID
- Matching Item
- Selectable Hot Text

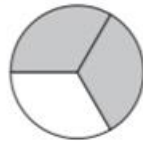


# Item Types

## Multi-Select

Kari represented a fraction by shading parts of the model shown.

**Kari's Fraction Model**

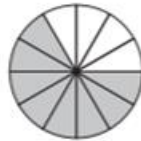


Select all the models that have been shaded to represent fractions equivalent to Kari's fraction.

A



D



B



E



C



## Multiple Choice

14. Which equation is true?

- A  $340 + 20 = 370 + 10$
- B  $340 + 30 = 350 + 10$
- C  $340 + 40 = 340 + 10$
- D  $340 + 50 = 380 + 10$

# Item Types

## 3rd Grade Grid

	/	/	/	/	/		
0	0	0	0	0	0	0	0
1	1	1	1	1	1	1	1
2	2	2	2	2	2	2	2
3	3	3	3	3	3	3	3
4	4	4	4	4	4	4	4
5	5	5	5	5	5	5	5
6	6	6	6	6	6	6	6
7	7	7	7	7	7	7	7
8	8	8	8	8	8	8	8
9	9	9	9	9	9	9	9

} Answer boxes  
} Fraction bar  
} Number bubbles

## 4th and 5th Grid

	/	/	/	/	/		
.	.	.	.	.	.	.	.
0	0	0	0	0	0	0	0
1	1	1	1	1	1	1	1
2	2	2	2	2	2	2	2
3	3	3	3	3	3	3	3
4	4	4	4	4	4	4	4
5	5	5	5	5	5	5	5
6	6	6	6	6	6	6	6
7	7	7	7	7	7	7	7
8	8	8	8	8	8	8	8
9	9	9	9	9	9	9	9

} Answer boxes  
} Fraction bar  
} Decimal point  
} Number bubbles

# Matching

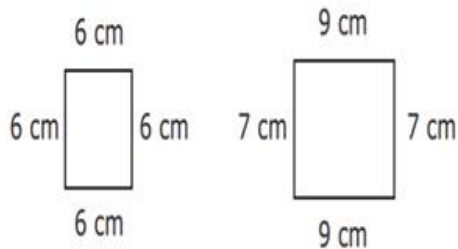
Match each number to the value of the number rounded to the nearest 10.

	<b>180</b>	<b>190</b>	<b>200</b>
<b>181</b>	(A)	(B)	(C)
<b>186</b>	(D)	(E)	(F)
<b>194</b>	(G)	(H)	(I)



## Editing Task Choice – Item Type

The two figures shown are measured in centimeters (cm).



Complete the statement about the two figures. For each blank, fill in the circle **before** the word or phrase that is correct.

The shapes are both  (A) squares  (B) trapezoids  (C) rectangles

because  (A) all the angles in each shape are right angles.  (B) all the sides of each shape have the same length.  (C) all the sides of each shape are made of straight lines.

Kaiya and Deangelo each create a number pattern.

- Kaiya's pattern uses the rule "Add 2" and has a first term of 6.
- Deangelo's pattern uses the rule "Add 4" and has a first term of 5.

Complete the statement that describes the relationship between the two number patterns. For each blank, fill in the circle **before** the word or phrase that is correct.

The two patterns  (A) have  (B) do not have terms in common because

Kaiya's pattern has  (A) only odd  (B) only even  (C) both odd and even numbers and

Deangelo's pattern has  (A) only odd  (B) only even  (C) both odd and even numbers.



EDUCATION

# Florida Statewide Standards Assessment (FSSA)

## Test Design for Science



## SCIENCE FSSA

- Covers NGSS Standards from Grades K-5
- Paper Based Test
- 2 – 80 minute sessions
- (8<sup>th</sup> test in one day/ 5<sup>th</sup> in 2 days)
- Multiple Choice only
- Test Booklet with Bubble Sheet

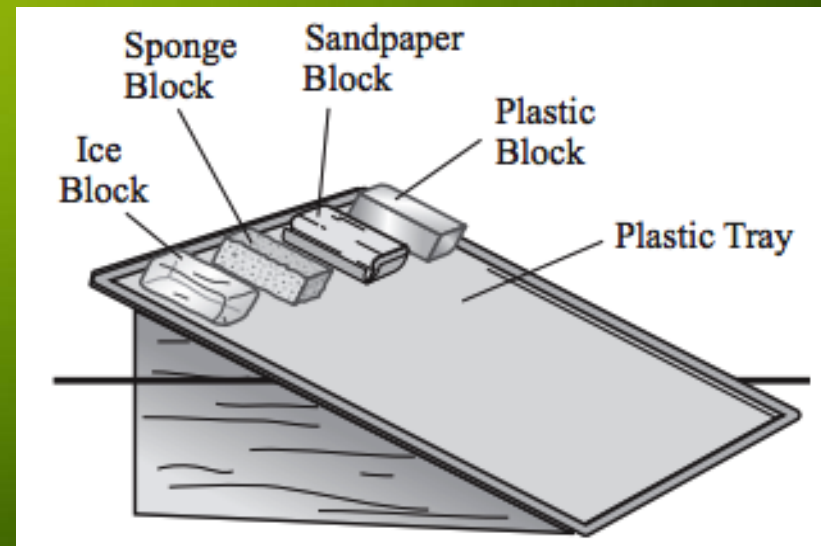


## FSSA Breakdown

- Nature of Science 17%
- Earth and Space Science 29%
- Physical Science 29%
- Life Science 25%

## Sample Question (High CC)

Felipe and Marsha were studying forces and decided to do an experiment. They placed four equally sized blocks made of different materials on an elevated plastic tray. They watched each of the blocks move down the tray. Their setup is shown below.



Which of the following conclusions can Felipe and Marsha make about the forces that cause the blocks to move down the tray?

- A. The force of friction is the same on each block.
- B. The force of friction causes the speed of each block to increase.
- C. The force of gravity causes all the blocks to move at the same speed.
- D. The force of gravity is greater than the force of friction on all the blocks.



EDUCATION



# TEST ANXIETY

# 10 Ways to Keep the STRESS Out of Testing!





# 1. Prepare



Students & Families



Test Administration



Technology Resources



About the FSAs

## Welcome to the FSA Portal

This portal is your source for information about the Florida Standards Assessments.

Florida's K-12 assessment system measures students' achievement of Florida's education standards, which were developed and implemented to ensure that all students graduate from high school ready for success in college, career, and life. Assessment supports instruction and student learning, and test results help Florida's educational leadership and stakeholders determine whether the goals of the education system are being met.

For information about Statewide Science or NGSS EOC Assessments, please visit <http://www.fldoe.org/accountability/assessments/k-12-student-assessment>.

For more information about Florida standards, course descriptions, and standard resources, please visit [www.cpalms.org](http://www.cpalms.org).





## Informational Resources

**Florida Department of Education**

[www.fldoe.org](http://www.fldoe.org)

**FSA Portal**

<http://www.fassessments.org/>

***Smathsmarts***

[www.smathsmarts.com](http://www.smathsmarts.com)

**Iready**

[www.lready.com](http://www.lready.com)

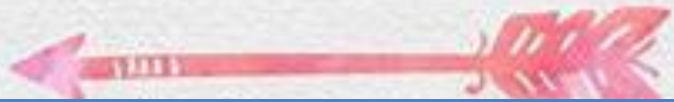
EDUCAT

2. Get a good night's sleep!

3. Fuel Up

4. Get to school early

5. Positive attitude 😊



Be Serious,  
Be Confident,  
& Be Strategic



**6. Read  
Carefully**

**7. Just Start!**

**8. Try to FOCUS  
on what you  
are doing**

**9. Watch your  
time**

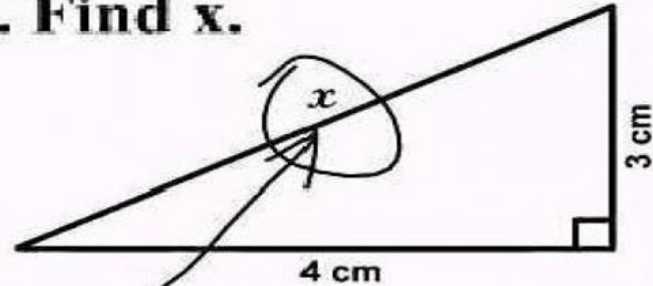




## 10. Focus on CALM Breathing

## Relax and Laugh

3. Find  $x$ .



Here it is

FUNNYEXAM.COM

10. Students in Mrs. Levine's class have a milk box with each snack. The class has two snacks a day. What can you tell about students in the class?

1/2  
They are

hungry and

thirsty

They have 2 milk boxes a day.

© Macmillan/McGraw-Hill

FUNNYEXAM.COM

Where was the American Declaration of Independence signed?

At the bottom.

FUNNYEXAM.COM